

# INSTRUCTION MANUAL **En**



**!!!Please refer to our website: [www.geemarc.com](http://www.geemarc.com) for an up to date user guide, as there may be important updates and changes you need to be aware of !!!**

## Cautions:

### Precautions and maintenance

- For indoor use only
- To avoid risk of fire or electric shock, do not expose the unit to moisture or condensation.
- To avoid overheating, do not block the ventilation holes on the back of the Clock Display.
- Keep the Clock Display out of direct sunlight.
- Do not dismantle the Clock Display. There is a risk of electric shock and there are no user-serviceable parts inside. Dismantling the Clock Display will void your warranty.

### Cleaning the LCD Screen

- Treat the screen carefully. The screen of the Clock Display is made of glass and can easily be broken or scratched.
- If fingerprints or dust accumulate on the LCD screen, we recommend using a soft, non-abrasive cloth such as a camera lens cloth to clean the LCD screen.
- Moisten the cleaning cloth with a cleaning solution and apply the cloth to the screen.

## Introduction:

Thank you for the purchase of the Clock Display. It is designed to allow you to see the time quickly and easily and any warning functions displayed.

Please read this User Manual carefully to use the Clock Display correctly.

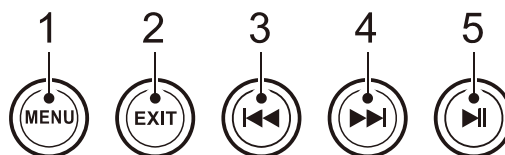
**Features:** Days Clock

### Packaging Check List:

- 7 inch Clock Display
- User manual
- Bracket
- AC adapter


## 1. Product Diagram

### 1.1 Back side Buttons



1. Menu
2. Exit
3. Vol- / Up / Left / Increase
4. Vol+ / Down / Right / Reducing
5. Play / Pause / OK

### 1.2 Left side of the Clock Display

DC in “” on the left side of the Clock Display.  
5V  $\overline{\text{---}}$  1.5A

## 2. Getting Started

1. Place the Clock Display with installing bracket on a steady flat position, then plug the AC adapter into a standard 100-240V AC electrical outlet and the other end into the DC IN slot on the left side of the Clock Display.
2. Remove the protective film covering the Screen.
3. Hold and Press the **MENU** button on the backboard to On/Off Switch.

## 3. Operating Instruction

When you power the unit on for the first time it will show the startup logo. Then the main menu will display after a few seconds. After this the Days Clock will display you can easily see the details week day, time, month and year on the Clock Display screen, and they will change automatically.

## 4. Setting

Press **Menu** key and select the **Setting** icon in the main menu. Press “**▶▶**” Button to enter the **Setting** interface and press **◀◀ ▶▶** to highlight your selection. Press “**▶▶**” Button to enter the setting value. Then hold and press **◀◀ ▶▶** to set the value.

You can select Style Setup, Set Days-Clock, Calendar Setup, System Setup, and so on.

### 4.1. System Setup

#### Language

Changes the operating language of the photo Clock Display. Available Values: English, Nederland, Français, Deutsch, Italiano, Espanol, Hebrew.

#### Grayscale

Hold and press “**◀◀◀**” or “**▶▶▶**” buttons to select the Gray Scale level that you require between 1 to 10.

#### Brightness

Hold and press “**◀◀◀**” or “**▶▶▶**” buttons to select the Brightness level that you require between 1 to 10.

#### Contrast

Hold and press “**◀◀◀**” or “**▶▶▶**” buttons to select the Contrast level that you require between 1 to 10.

#### Auto power on & off function

##### Remarks:

1. In order to activate the auto power ON & OFF function, please check the settings for the **Sleep timer** and **Auto boot Time** are set correctly. If set to **OFF**, the function is not activated.
2. A reminder for the Auto OFF appears 1 Minute before the frame switches off. Press any key to cancel the Auto OFF function.
3. If Power OFF is activated and the frame switches off at the selected time, the frame goes into Sleep-mode. To switch the frame on again, you need to press and hold the **Menu** Button at the rear side of the frame.

#### Auto Shut Time

Set the auto power off time in the format of “[Hour]: [Minute]”. Choose **System setup/ Auto shut time** with **▶▶**. Use the “**◀◀◀**” or “**▶▶▶**” buttons to switch between fields, hold and press “**◀◀◀**” or “**▶▶▶**” buttons to change time field values. Keep the Sleep Timer on.

#### Auto Boot Time

Set the auto power on time in the format of “[Hour]: [Minute]”. Choose **System setup/ Auto boot time** with **▶▶**. Use the “**◀◀◀**” or “**▶▶▶**” buttons to switch between fields, hold and press “**◀◀◀**” or “**▶▶▶**” buttons to change time field values. Keep Regular Boot on.

#### Power Frequency:

You can choose to set the function auto power ON/OFF as follows:  
- Workday, Week end, Once, Every day. Use the “**◀◀◀**” or “**▶▶▶**” buttons to switch between fields, hold and press “**◀◀◀**” or “**▶▶▶**” buttons to change mode field values.

#### Firmware Version:

You can check the software version of your Viso 20.

### Reset Default settings:

Use this function to set your Viso 20 with the factory parameters. Choose Reset default setting and press “▶▶” Button to enter, Use the “◀◀” or “▶▶” buttons to select Yes and press “▶▶” Button to validate.

## 4.2. Calendar Setup

### Adjust Date

Set the current date in the format of “[Year]: [Month]: [Day]”. Short press the “◀◀” or “▶▶” buttons to switch between fields, hold and press “◀◀” or “▶▶” buttons to change date field values.

### Adjust Time

Set the current time in the format of “[Hour]: [Minute]”. Short press the “◀◀” or “▶▶” buttons to switch between fields, hold and press “◀◀” or “▶▶” buttons to change time field values. Press ▶▶ to save.

### Time Format

Change to display the time in either 12-hour or 24-hour time format. Available Values: 12 Hours, 24 Hours. Hold and press “◀◀” or “▶▶” buttons to change the Time Format.

## 4.3 Set Days Clock

Select **Set days Clock** in the main menu. Press “▶▶” Button to enter the **Setting** interface and short press ◀◀ ▶▶ to highlight your selection (Morning, Evening, Afternoon, Night to select). Short press “▶▶” Button to enter setting interface , then short press ◀◀ ▶▶ to select area , hold and press ◀◀ ▶▶ for 1-2 second to adjust the Value down and up ,after that, press ▶▶ to complete ,follow this method for the setting you require.

## 4.4 Style Setup

Select **Style setup** in the main menu. Press “▶▶” Button to enter the **Setting** interface and short press ◀◀ ▶▶ to your selection (Style1, style2 and style3 to select). Short press “▶▶” Button to complete .

**Style 1: Day of the week, hour and date**

**Style 2: Day of the week, time of day, hour and minute**

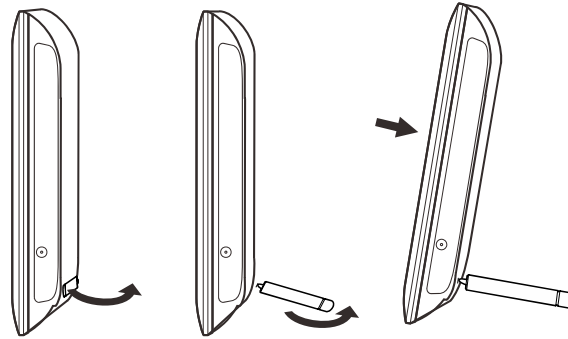
**Style 3:** The screen displays “Now it’s (day of the week and time of day)

## 5. Troubleshooting Guide

If you are having problems with your Viso 20 clock or for further assistance, please contact Technical Support.

- **No power:** Please check whether the AC-Adaptor is inserted correctly.
- **Display too bright or too dark:** Please adjust the brightness or contrast in the setup menu.
- **The colour is light or no color:** Please adjust the color and contrast setup.

## 6. Stand Instruction



The bracket is connected to the back cover of the product. Please open the bracket before you place it steadily on the table, pull the bracket to the slot before you pick it up. Please refer to the illustration above.

## 7. Technical Specifications

- **Adapter:** Input AC 100-240V 50/60HZ Output DC 5V/1.5A
- **Screen Parameter:**

Screen Size:	7 inch TFT
Resolution:	800*480 Pixels
Contrast:	400-500:1
Aspect Ratio:	4:3
Brightness:	300-400cd/ m <sup>2</sup>
Response Time:	20ms
Viewing Angle:	60°(left/right/vertical), 40°(horizontal)
Working Temperature:	0 °C ~ 40 °C
Humidity:	10-85%

## GUARANTEE

From the moment your Geemarc product is purchased, Geemarc guarantee it for the period of two years. During this time, all repairs or replacements (at our discretion) are free of charge. Should you experience a problem then contact our help line or visit our website at [www.geemarc.com](http://www.geemarc.com).

The guarantee does not cover accidents, negligence or breakages to any parts. The product must not be tampered with or taken apart by anyone who is not an authorized Geemarc representative.

The Geemarc guarantee in no way limits your legal rights.

**IMPORTANT:** YOUR RECEIPT IS PART OF YOUR GUARANTEE AND MUST BE RETAINED AND PRODUCED IN THE EVENT OF A WARRANTY CLAIM.

**Please note: The guarantee applies to the United Kingdom only.**

## DECLARATIONS:

### CE Directives

Geemarc Telecom SA hereby declares that this product is in compliance with the essential CE Directive requirements..

The CE declaration of conformity may be consulted at [www.geemarc.com](http://www.geemarc.com)

**Electrical connection:** The apparatus is designed to operate from a 230V 50Hz supply only. (Classified as hazardous voltage according to EN60950 standard). The apparatus does not incorporate an integral power on/off switch. To switch off the apparatus, disconnect the power adaptor. When installing the apparatus, ensure that the mains power socket is readily accessible.

### Recycling Directives

The WEEE (Waste Electrical and Electronic Equipment) has been put in place for the products at the end of their useful life are recycled in the best way.

When this product is finished with, please do not put it in your domestic waste bin. Please use one of the following disposal options:

- Remove the batteries and deposit them in an appropriate WEEE skip.

Deposit the product in an appropriate WEEE skip.

- Or, hand the old product to the retailer. If you purchase a new one, they should accept it.

Thus if you respect these instructions you ensure human health and environmental protection.



For product support and help visit our website at

[www.geemarc.com](http://www.geemarc.com)

telephone **01707 387602**

or fax **01707 832529**

