

INSTRUCTION MANUAL

Please read these instructions carefully before use and retain them in a safe place for your future reference.



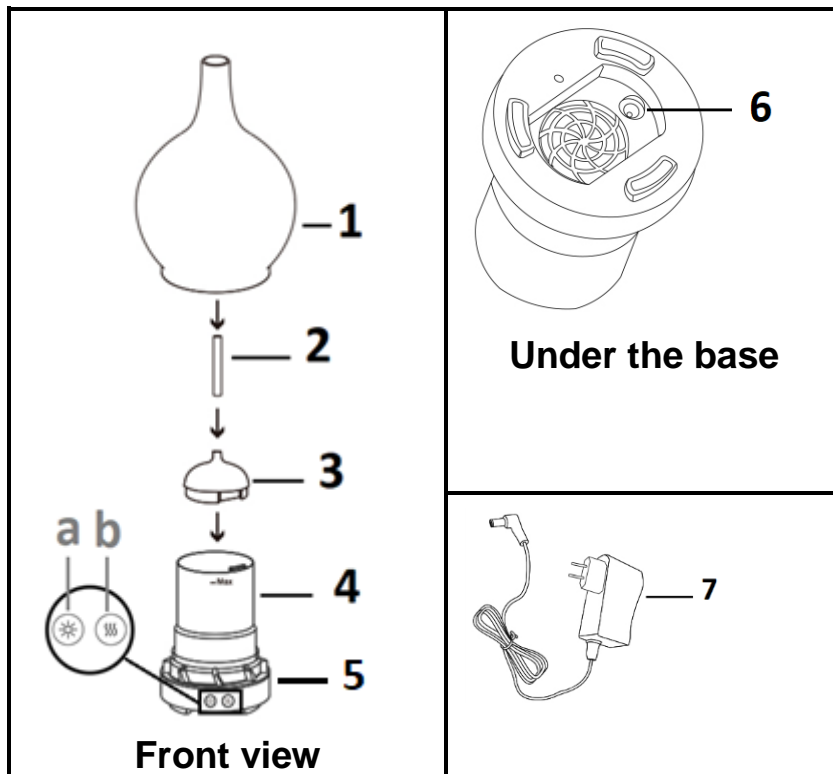
This device can be used by children over the age of 8 and by individuals with reduced physical, sensory or mental abilities with limited experience or knowledge, as long as they are correctly supervised or if they have been safely given the device operating instructions and if the risks involved have been fully taken into account. Children should not play with the device. Cleaning and maintenance by the user should not be carried out by children without supervision.

IMPORTANT SAFETY GUIDELINES

1. Before connecting the appliance to the mains, make sure the voltage of your appliance indicated on the rating plate corresponds to the local voltage.
2. Do not move or unplug the appliance by pulling on the cord.
3. In order to disconnect the device power supply, pull on the plug, **NOT** the cable.
4. Only use the appliance on a stable surface.
5. Do not insert any objects into the device openings as they could come into contact with live electrical components or cause a short circuit and there would be a risk of electrocution or fire.
6. Do not subject it to strong impacts and do not throw it.
7. Do not drop, short-circuit, modify, disassemble or puncture it.
8. Unplug the device from the wall and hire a qualified professional to carry out the repair in the following cases:
 - a. If the power cord or plug becomes damaged.
 - b. If the device is not functioning properly.
 - c. If the device has fallen or suffered any damage and no longer functions as before.
9. If a part needs to be replaced, ensure that the technician uses the replacement part specified by the manufacturer or a part with the same characteristics as the original part. The replacement of any parts with unauthorised parts can result in fire, electrocution or other dangers.
10. **All repairs should be done by a qualified technician.**
11. Keep it away from heat sources, direct sunlight, humidity, water or other liquids.
12. Do not operate it under high temperature.

13. Always switch off and disconnect the device after use, when filling it and before cleaning it.

PRODUCT DESCRIPTION



1. Cover
 2. Air outlet
 3. Chamber cover
 4. Chamber
 5. Base
 6. Jack plug socket for adaptor
 7. Adaptor
- a. Start/Stop Button (LEDs)
b. Start/Stop Button (dispenser)

3 functions: perfume dispenser, humidifier and ambient lighting

TECHNICAL SPECIFICATIONS

Dispenser

DC 24V 0.65A 15.6W

Adaptor

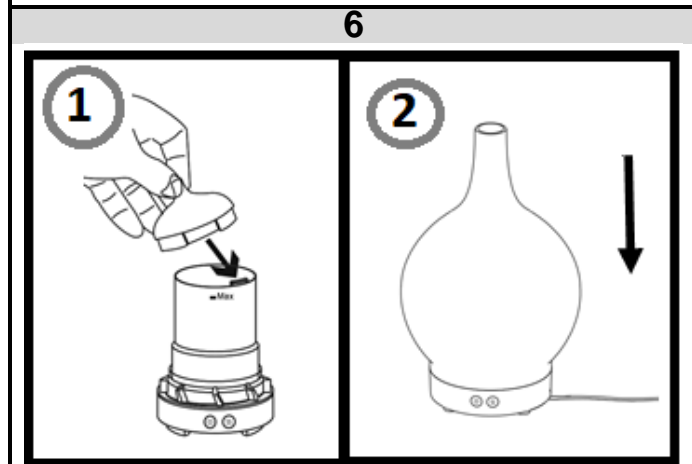
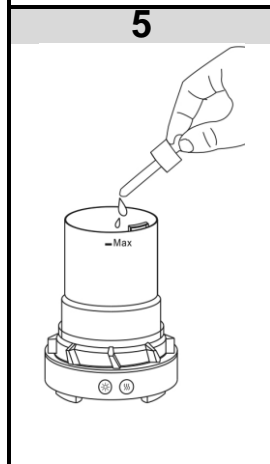
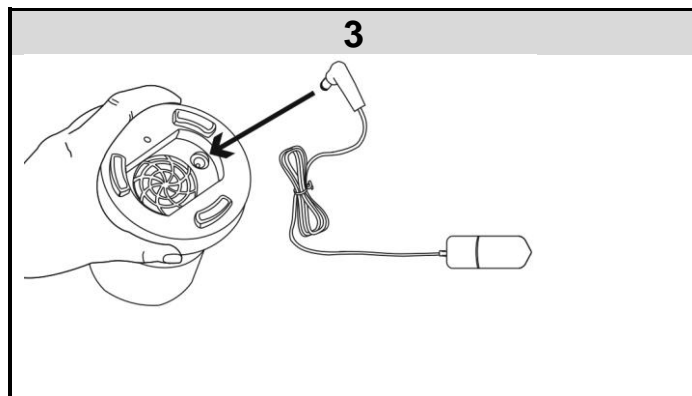
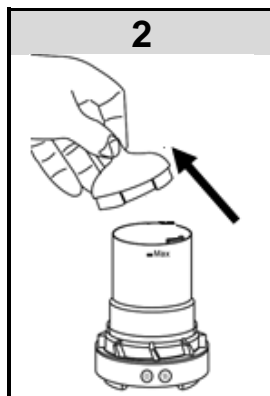
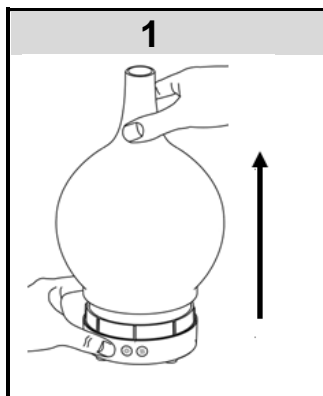
AC100-240V, 50-60Hz
DC 24V, 500mA

Chamber capacity: 200 ml

OPERATION

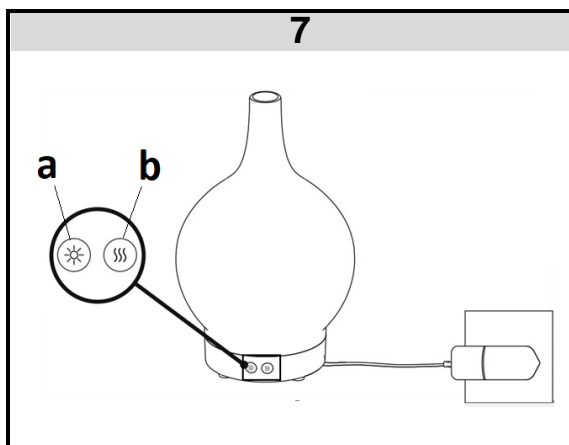


- Place the dispenser on a dry, flat, stable surface, 60 cm from the floor and at least 10 cm from walls or other objects.
- Use cold water from the tap or distilled or filtered water.
- Keep away from wooden, nylon or inflammable surfaces, radiators and other heat sources.
- Do not use in confined spaces.
- Do not tilt or tip the dispenser when in use.



Do not fill the chamber beyond the maximum level mark!

Add 2 or 3 drops of essential oil.



Activating/deactivating the "mist" function

Press button **b** to activate or deactivate the "mist" function.

Start/Stop for the LED bulb

Press button **a** to light the LED bulb

Press button **a** repeatedly to select any of the 7 colours. When you have selected a colour, stop pressing the button.

To switch off, press and hold down the button for 3 seconds.

Note: When the chamber is empty, the device switches off automatically.

INFORMATION ON THE USE OF ESSENTIAL OILS

- Store essential oil containers in a dry area, protected from heat, sun and light.
- Essential oils may be concentrated. Use them with caution, keeping to the dosage.
- Keep out of the reach of children and pets.
- Do not swallow.

- Close the stopper correctly after use because essential oils are very volatile and the aroma may escape.

CLEANING AND MAINTENANCE

- **DO NOT IMMERSE THE BASE AND THE RESERVOIR IN WATER.**
- Do not use abrasive products or cleaners.
- Before re-connecting the dispenser the device and all its elements must be completely dry.

- Clean the dispenser regularly, at least twice a week and empty the remaining water in the chamber after use to prevent the accumulation of bacteria.
- Before cleaning always disconnect the device from the wall socket and from the adaptor socket beneath the device.
- Remove the glass cover and the chamber cover with care.

Chamber

- To empty the chamber, tilt it slightly to the side from which the vapour is released.
- Moisten a cloth in a solution of warm water with a little washing-up liquid. Squeeze out excess moisture and clean the interior; rinse with clear water. Dry with kitchen paper.
- Wipe the exterior surfaces of the chamber and the glass cover with a damp cloth. Dry with a clean, dry, lint-free cloth.

Cleaning out scale deposits

- Fill the water chamber with water containing a small quantity of white vinegar.
- Allow to rest for 15 minutes, then rinse out well and dry.

WARNING: You should not dispose of this device with your household waste. A selective collection system for this type of product is implemented by your local authorities. Please contact your local authorities to find out how and where collection takes place. These restrictions apply because electrical and electronic devices contain dangerous substances that have harmful effects on the environment or on human health and must be recycled.

This symbol indicates that electrical and electronic devices are collected selectively. The symbol shows a waste container crossed out with an X symbol.

If the power cable is damaged, it must be replaced by the manufacturer, its after-sales service, or a person qualified in this area in order to avoid accidents.

**Imported by Prodis SAS 1 rue de Rome 93110 Rosny-sous-Bois-France/ Made in PRC
Marketed by EUROTOPS VERSAND GMBH D-40764 LANGENFELD**

